

Get to Know: Spring Amphibians

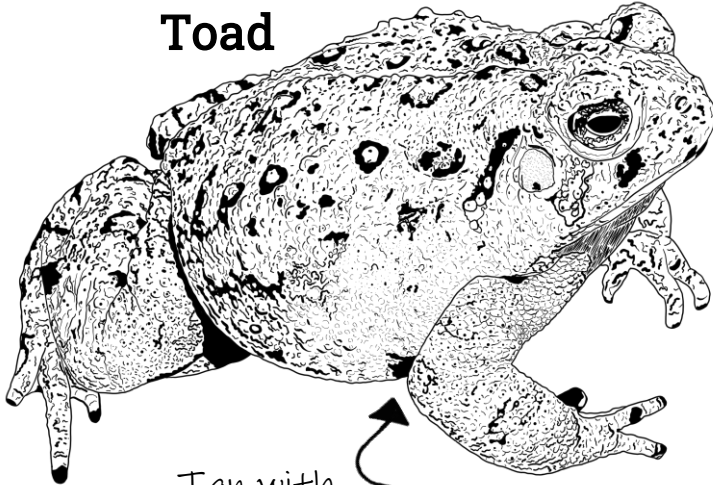
Color in some of Ohio's springtime amphibians!



Green and yellow
with red spots



**American
Toad**



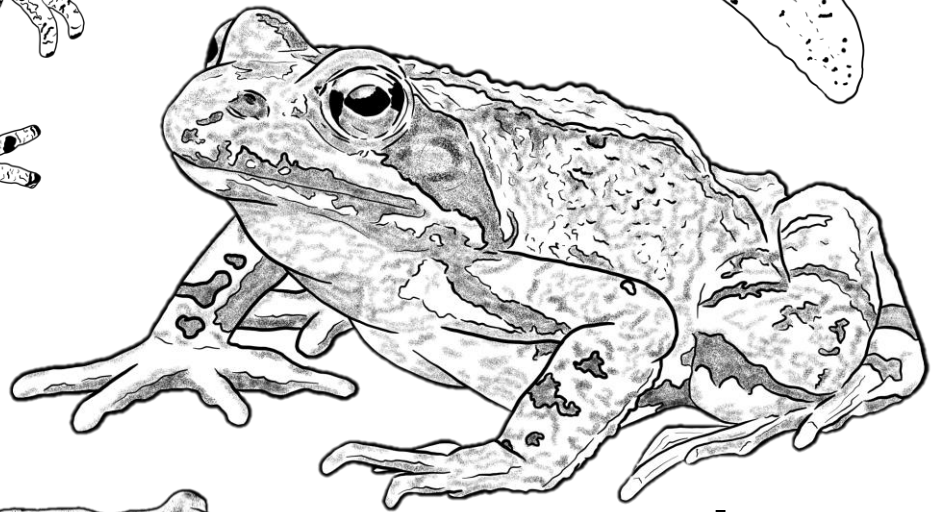
Tan with
bumpy skin



**Red-spotted
Newt**



**Spring
Peeper**



Wood Frog

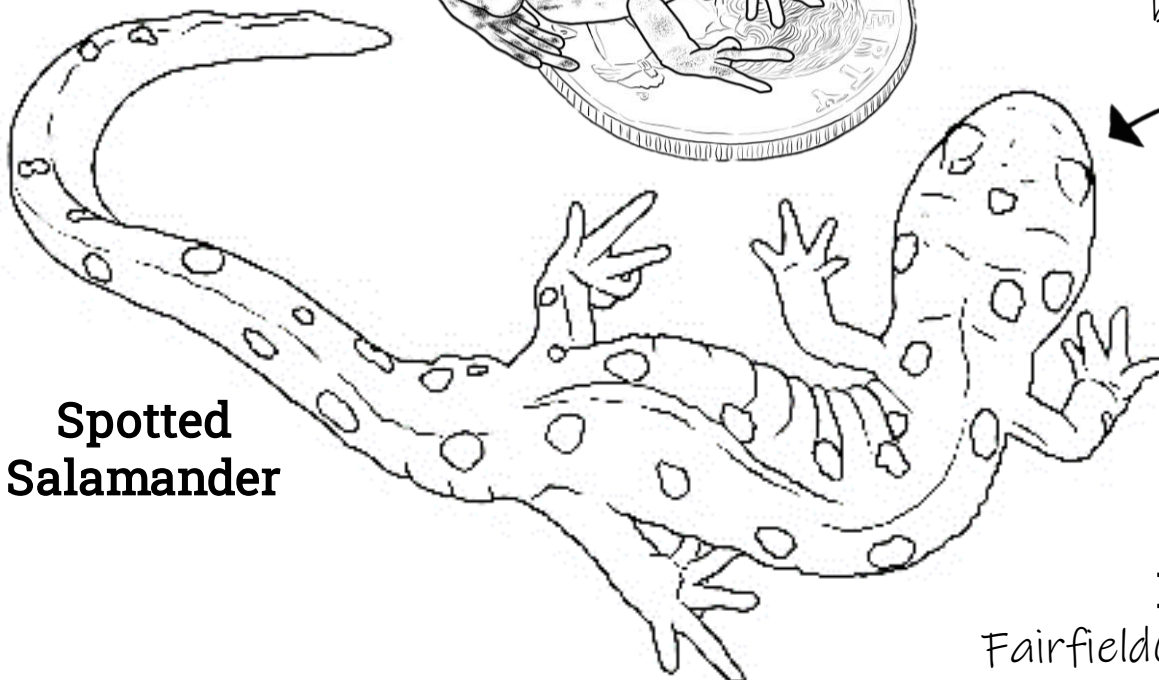
Tan with
brown spots



Brown with a
black mask



**Spotted
Salamander**



Dark with
yellow spots



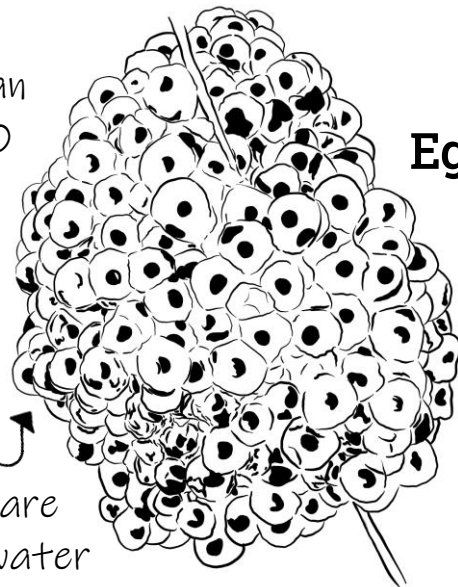
For more info:
FairfieldCountyParks.org

Life Cycle of a Wood Frog

Wood frogs are one of the first amphibians to begin breeding in early spring, often heading to pools just after the winter ice has melted.



A single egg mass can contain around 1000 individual eggs!

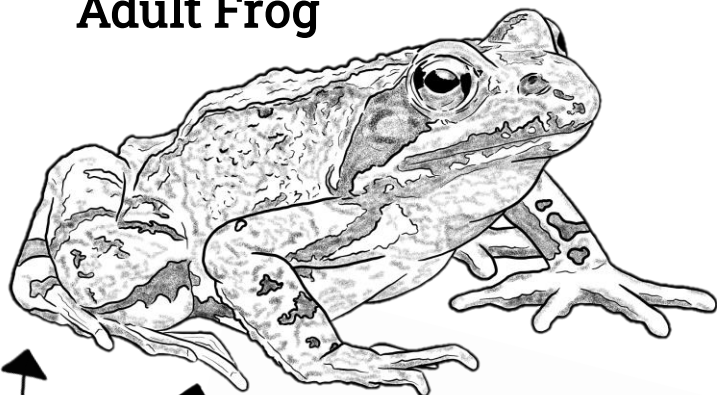


Egg Mass

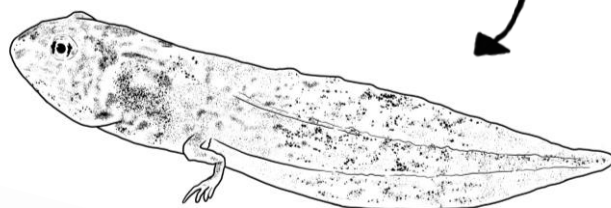
Eggs are laid in water

The eggs hatch within a couple weeks and tiny tadpoles emerge.

Adult Frog

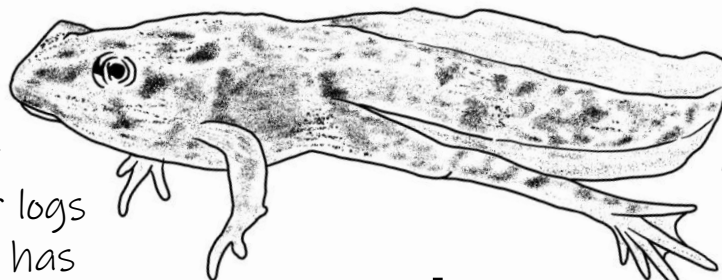


Tadpole



The adult Wood frog spends the winter hibernating under logs and leaf litter. It has special adaptations that allow its body to freeze and thaw. There are times when much of the frog's body is completely frozen!

Froglet



Tail becomes smaller as legs become bigger

Did you know... Tadpoles can recognize each other and even become friends!

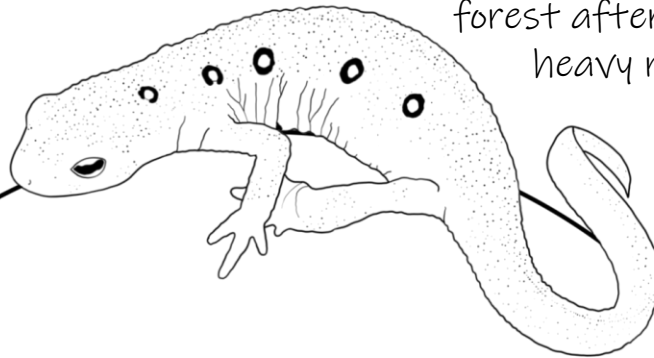
Life Cycle of a Red-spotted Newt

The red-spotted newt has a unique lifecycle. Most salamanders live in the water as young, then live on land as an adult. It is the opposite for this newt!



Red Eft

The red eft lives on land and is commonly found in the forest after a heavy rain.



After a few months, the larva loses its gills and begins to use lungs instead. The young then emerge from the water and live on land.

After a few years, the newt again begins to change. Its tail becomes wider, its skin turns slimy and green. The newt is now ready to return to the water, where it will spend the rest of its life!

Larva



Eggs hatch into larvae. These young newts eat and grow.

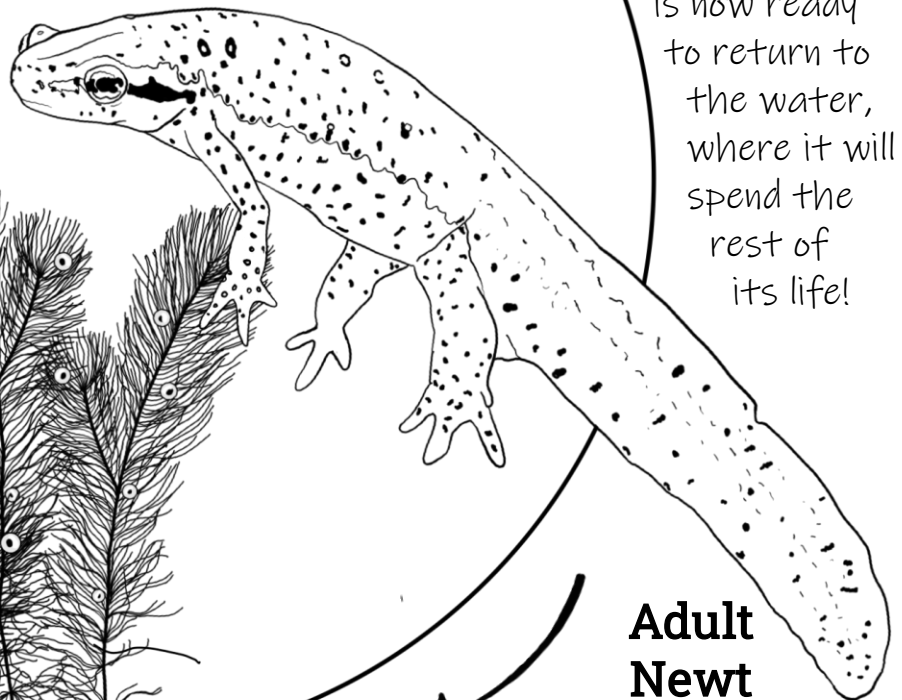
Eggs

Several hundred eggs are laid on underwater plants during the spring months.



Adult Newt

Adult newts live in the water, and have a lifespan of 12-15 years!



Spring Egg Masses

Telling the difference between frog and salamander egg masses can be quite easy. Here are some of the ways you can tell them apart:

