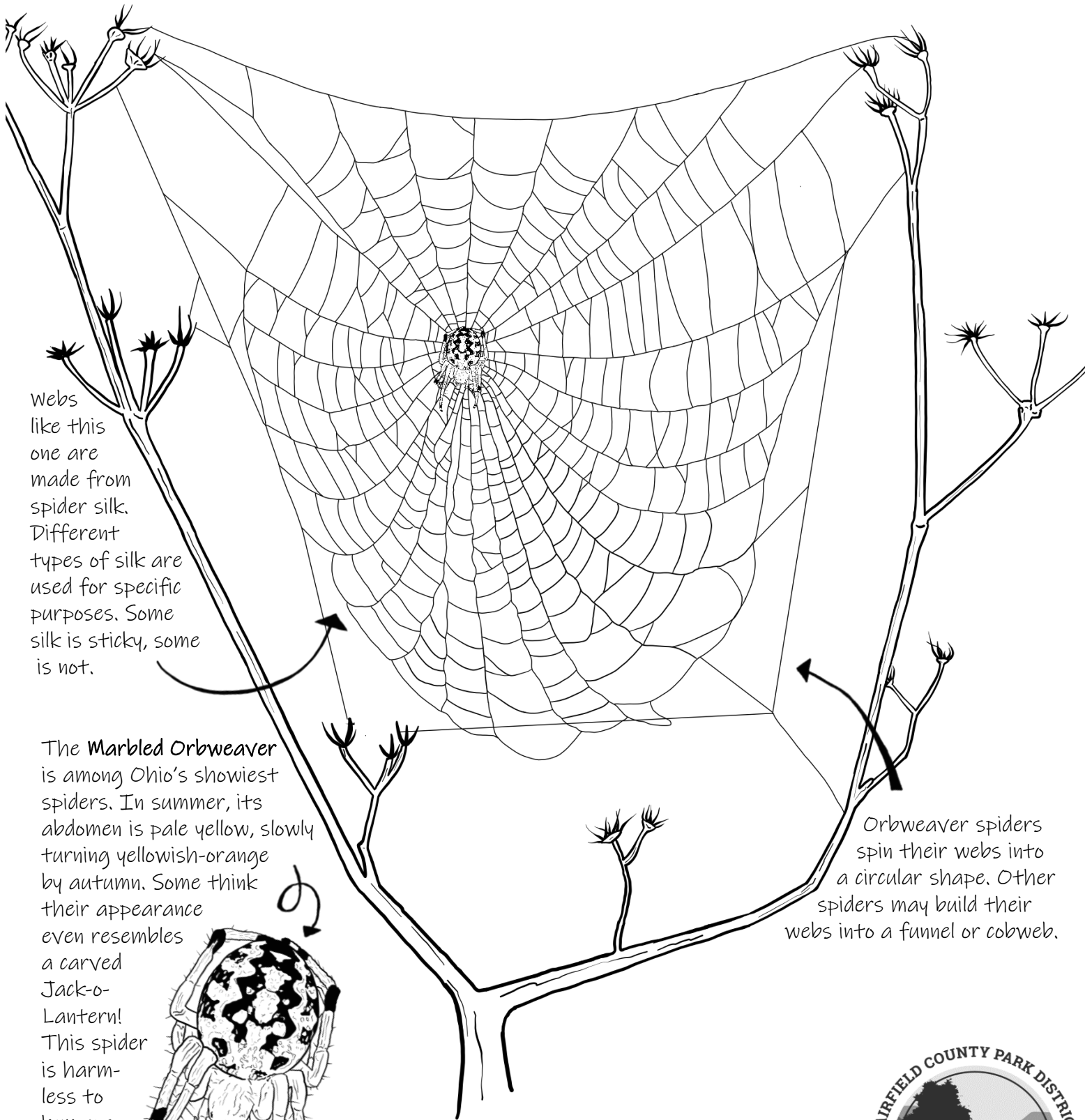


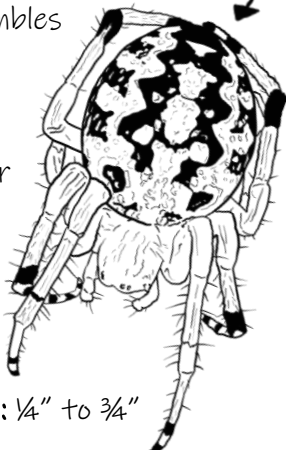
# Get to Know: Ohio's Common Spiders

Spiders are found nearly everywhere. Just here in Ohio there are over 600 known species! These creatures play an important role in the ecosystem.



Webs like this one are made from spider silk. Different types of silk are used for specific purposes. Some silk is sticky, some is not.

The **Marbled Orbweaver** is among Ohio's showiest spiders. In summer, its abdomen is pale yellow, slowly turning yellowish-orange by autumn. Some think their appearance even resembles a carved Jack-o-Lantern! This spider is harmless to humans and pets.



Size: 1/4" to 3/4"

Orbweaver spiders spin their webs into a circular shape. Other spiders may build their webs into a funnel or cobweb.

**For more visit:**  
[FairfieldCountyParks.org](http://FairfieldCountyParks.org)



# What is a Spider?

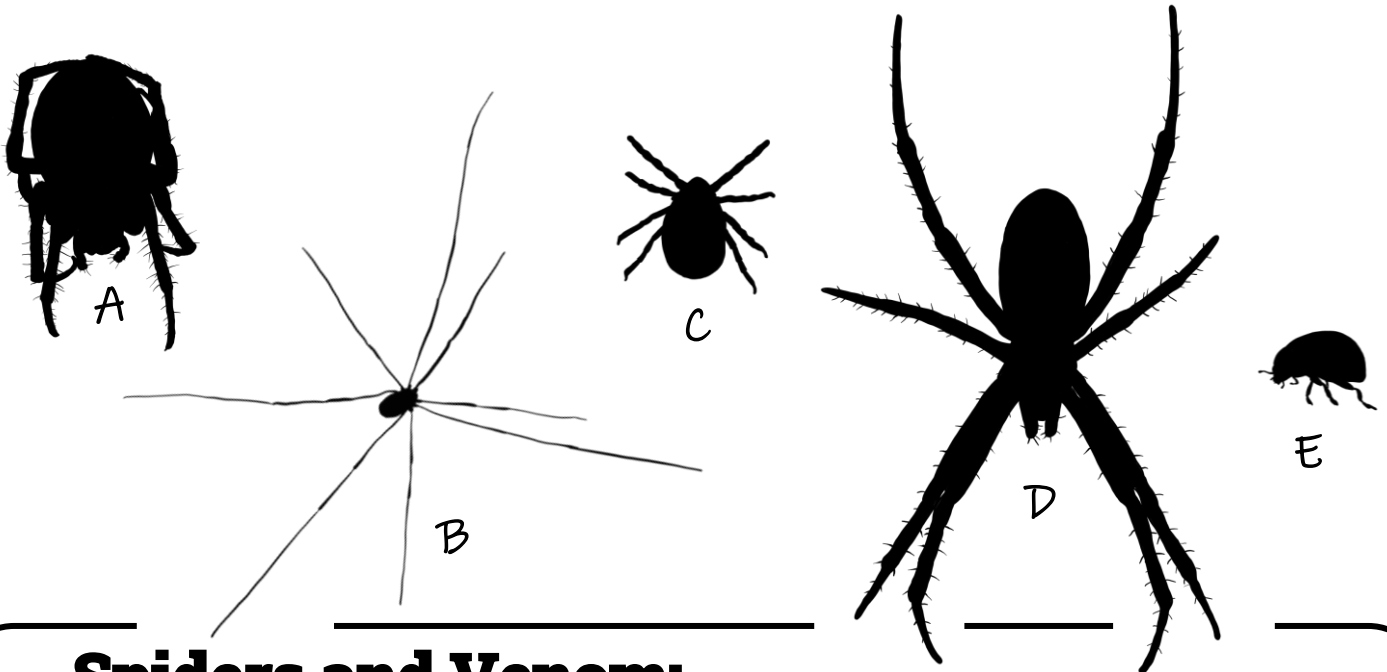


It is easy to confuse spiders with other creatures that resemble them. Here are some tips for figuring out what is and is not a spider:

Spiders are not insects. Insects have six legs while spiders have eight. Instead, spiders belong to a group known as *arachnids*. Other animals, such as mites, scorpions, ticks, and "daddy-long-legs" are also considered arachnids.

What separates spiders from other arachnids is that spiders have two body segments.

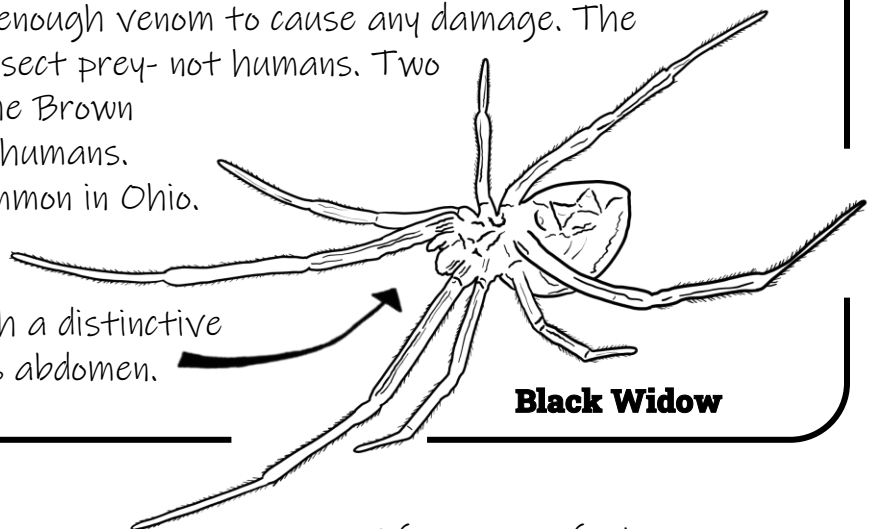
**Circle the TWO spiders below. (See answer at bottom of page)**



## Spiders and Venom:

Many spiders have venom. Fortunately, this venom rarely affects humans or pets. With most spider bites, there is not enough venom to cause any damage. The spider's venom is best adapted for insect prey- not humans. Two Ohio spiders, the Black Widow and the Brown Recluse, are considered dangerous to humans. Both of these species are very uncommon in Ohio.

The **Black Widow** spider is easily identified by its coloration- black with a distinctive red hourglass on the underside of its abdomen.



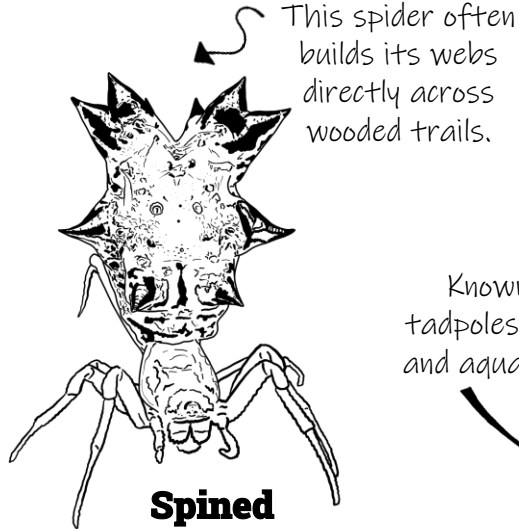
**Black Widow**

A-SPIDER (8 legs, 2 body segments) B-NOT A SPIDER (Daddy-long-legs, 8 legs, only 1 body segment) C-NOT A SPIDER (tick, 8 legs, only 1 body segment) D-SPIDER (8 legs, 2 body segments) E-NOT A SPIDER (ladybug beetle, 6 legs)

# Common Ohio Spiders



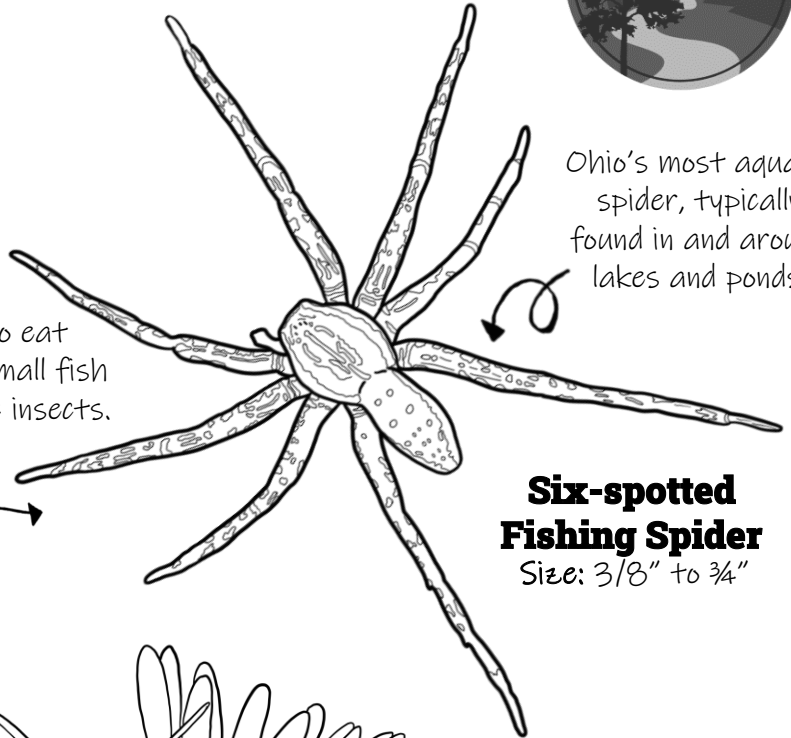
Here are some of the most common spiders found in Ohio:



This spider often builds its webs directly across wooded trails.

**Spined Micrathena**

Size: 1/8" to 3/8"



Ohio's most aquatic spider, typically found in and around lakes and ponds.

Known to eat tadpoles, small fish and aquatic insects.

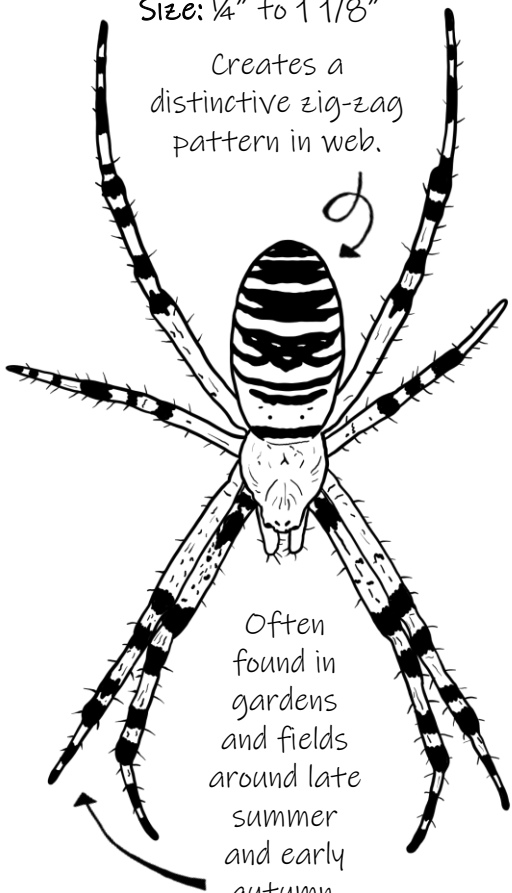
**Six-spotted Fishing Spider**

Size: 3/8" to 3/4"

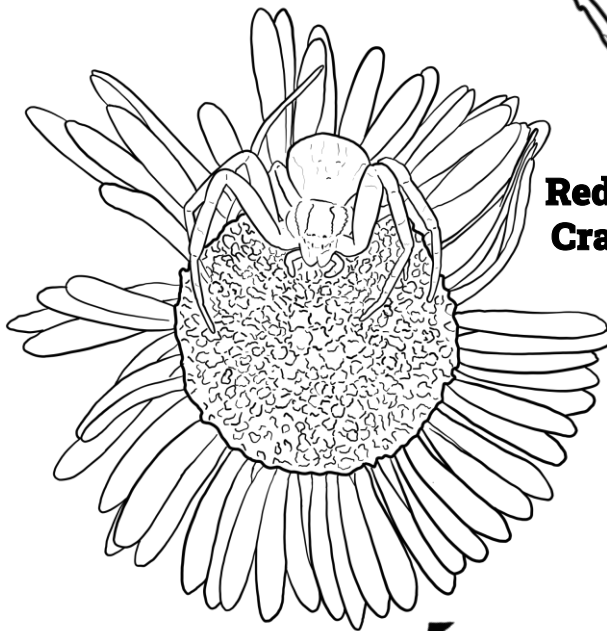
**Black-and-Yellow Garden Spider**

Size: 1/4" to 1 1/8"

Creates a distinctive zig-zag pattern in web.



Often found in gardens and fields around late summer and early autumn.

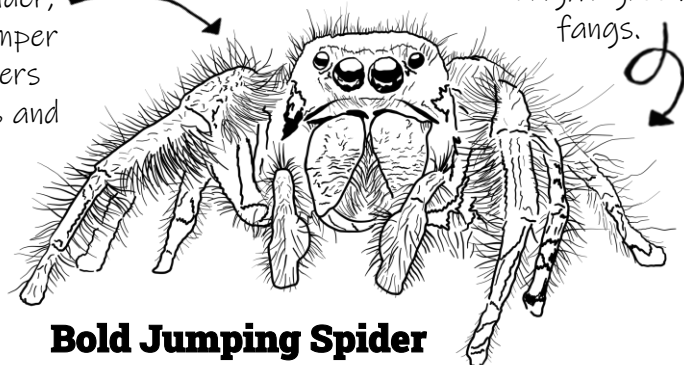


**Red-banded Crab Spider**

Size: 1/16" to 3/8"

This spider can change color to match its background. They can be yellow, white, or even pink depending on which flower they are lurking.

A curious spider, the Bold Jumper often wanders into buildings and houses.



This spider has bright green fangs.

**Bold Jumping Spider**

Size: 1/4" to 5/8"

# Spider Observations

First find a spider and its web. Then use this worksheet to make some observations on what you found.



**Drawing of Web:**

**Drawing of Spider:**

**Species Name** (if known):

**Date:**

**Habitat:**

**Notes:**